

DSDA Kineton
(The Oaks/Lower Oaks)
11th April, 2014

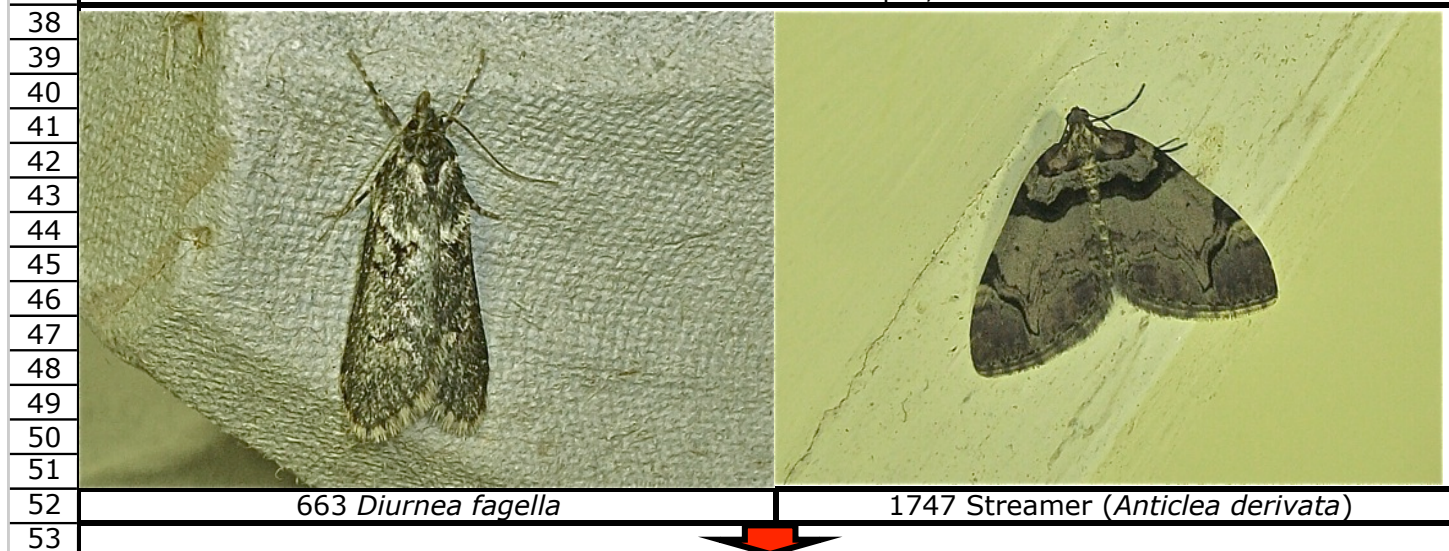
	A	B	C	D	E	F	G	H	I	J	K	L	M
1	New	B & F	Species Name	MK(p)	MK(a)	CJ1	CJ2	PB	AR	Far	Gen	TOTAL	Comment
2	4.045	50	<i>Stigmella aurella</i>					*5				-	*Mines
3	10.003	125	<i>Coptotriche marginea</i>					*1				-	*Mine
4	31.001	658	<i>Carcina quercana</i>					*1				-	*Laval Feeding Signs
5	29.001	663	<i>Diurnea fagella</i>	2	2		1	1		1	1	8	
6	49.186	1097	<i>Endothenia gentianaeana</i>						*1			-	*Larva
7	70.066	1746	SHOULDER STRIPE		1							1	
8	70.067	1747	STREAMER	1	3							4	
9	70.156	1852	BRINDLED PUG	1		1		1			1	4	
10	70.237	1917	EARLY THORN	3			2					5	
11	70.248	1927	BRINDLED BEAUTY					1		1		2	
12	73.245	2182	SMALL QUAKER	2	2	4	2	7		10	4	31	
13	73.247	2186	POWDERED QUAKER					2				2	
14	73.244	2187	COMMON QUAKER	8	2	2	2	5	2	4	3	28	
15	73.242	2188	CLOUDED DRAB	3	1	5	4					13	
16	73.250	2189	TWIN-SPOTTED QUAKER	2								2	
17	73.249	2190	HEBREW CHARACTER	8	2	3	2	6	1	1	3	26	
18	73.210	2256	SATELLITE		1			1				2	
19				30	14	15	13	24	3	17	12	128	

21	Caddis	"False" Grannom (<i>Stenophylax permistus</i>)		1								1	
22	Hoverfly	<i>Eristalis pertinax</i>						1				1	
23	Weevil	<i>Anthonomus pomorum</i>							1			1	Conf. S. Lane

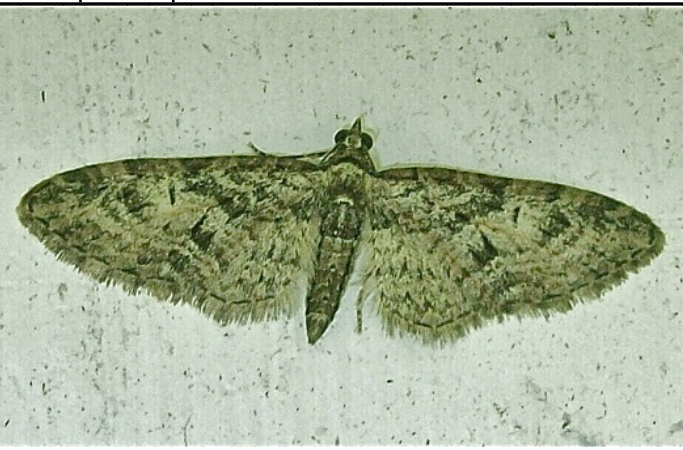






Recorders & Track Grid References	
Lower Oaks	
27	M. Kennard(p)= SP 3485 4871 125w MV
28	M. Kennard(a)= SP 3485 4869 30w Actinic
29	C. Johnson1= SP 3480 4868 15w Actinic
30	C. Johnson2= SP 3481 4866 15w Actinic
The Oaks	
32	P. Beasley= SP 3462 4879 125w MV
33	A. Ryder= SP 3462 4870 125w MV
34	A. Prior/V. Weston(F)= SP 3471 4872 125w MV
35	A. Prior/V. Weston(G)= SP 3471 4870 125w MV

Time: 20:30 > 02:00
Temperature: 7.8°C > -0.4°C
Wind: SW 3 > 1
Scattered Cloud > Clear, Icy!

DSDA Kinton Moths 11th April, 2015



DSDA Kineton
(The Oaks/Lower Oaks)
11th April, 2014

	A	B	C	D	E	F	G	H	I	J	K	L	M
54													
55													
56													
57													
58													
59													
60													
61													
62													
63													
64													
65													
66													
67	1852 Brindled Pug (<i>Eupithecia abbreviata</i>)			1917 Early Thorn (<i>Selenia dentaria</i>) (Photo: A. Ryder)									
68													
69													
70													
71													
72													
73													
74													
75													
76													
77													
78													
79													
80													
81	1927 Brindled Beauty (<i>Lycia hirtaria</i>)			2182 Small Quaker (<i>Orthosia cruda</i>)									
82													
83													
84													
85													
86													
87													
88													
89													
90													
91													
92													
93													
94													
95	2186 Powdered Quaker (<i>Orthosia gracilis</i>)			2187 Common Quaker (<i>Orthosia cerasi</i>)									
96													
97													
98													
99													
100													
101													
102													
103													
104													
105													
106	2190 Hebrew Character (<i>Orthosia gothica</i>)												