

Bishop's Hill

17th September, 2010

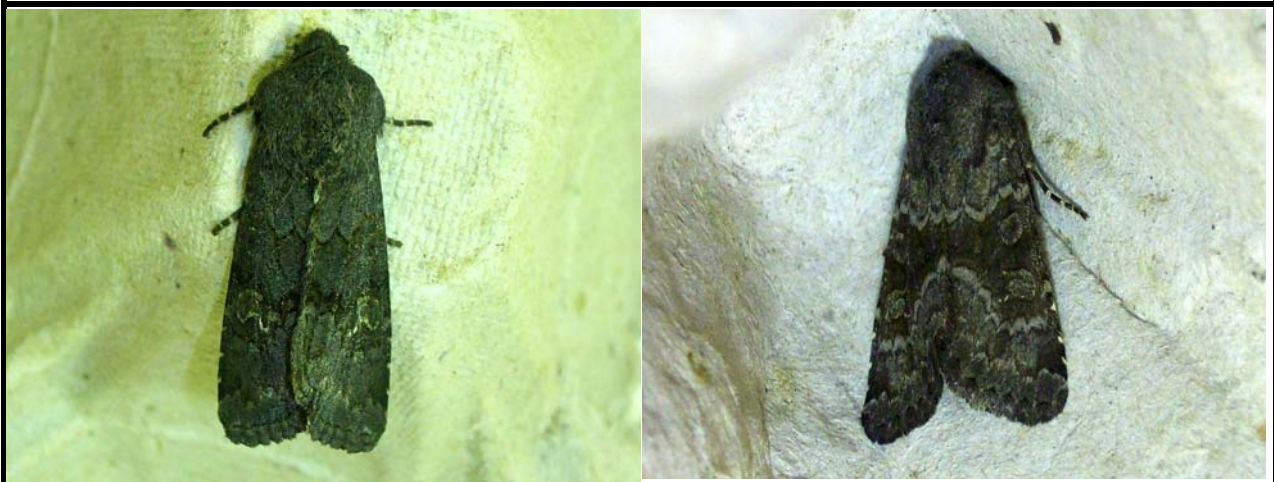
B & F	Species Name	JF	RW	AR	ST	MKmv	Mka	AP/VW	TOTAL	Comment
674	<i>Depressaria badiella</i>		1				1		2	2m Gen. Det. AP/MK
1524	<i>Emmelina monodactyla</i>		1					1	2	
1728	GARDEN CARPET				1				1	
1764	COMMON MARBLED CARPET					1		1	2	
1867	TREBLE-BAR					1	1		2	
1868	LESSER TREBLE-BAR						1		1	
1906	BRIMSTONE MOTH					1			1	
1913	CANARY-SHOULDERED THORN		1						1	
2087	TURNIP MOTH	1						1	2	
2102	FLAME SHOULDER		1						1	
2107	LARGE YELLOW UNDERWING	3	1	2	3	1	1	2	13	
2126	SETACEOUS HEBREW CHARACTER		1	1	2			3	7	
2134	SQUARE-SPOT RUSTIC		1	3	2			1	7	
2160	BRIGHT-LINE BROWN-EYE								—	1 Larva
2231	DEEP-BROWN DART		1					2	3	RW conf. D. Brown
2232	BLACK RUSTIC	1	1				2		4	
2266	BROWN-SPOT PINION							1	1	
2267	BEADED CHESTNUT				1				1	
2270	LUNAR UNDERWING			1	1				2	
2274	SALLOW				1				1	
2297	COPPER UNDERWING							1	1	
2364	FROSTED ORANGE		1					1	2	
2434	BURNISHED BRASS			1					1	
2452	RED UNDERWING				1				1	
		5	10	8	12	4	6	14	59	

Beetle	<i>Aphodius rufipes</i>							1	1	
Beetle	Sloe Shieldbug				1				1	
Beetle	7-spot Ladybird				1				1	
Gropper	Field Grasshopper				1				1	tbc S. Lane

Recorders & Trap Grid References	
J. Finlay=	SP 3929 5821 60w Actinic
R. Ward=	SP 3924 5819 125w MV
A. Ryder=	SP 3926 5816 125w MV
S.Trinder=	SP 3920 5817 125w MV
M. Kennard(mv)=	SP 3922 5812 80w MV
M. Kennard(a)=	SP 3933 5829 15w Actinic
A. Prior/V. Weston=	SP 3927 5818 125w MV

Time: 19:50 > 01:00
Temperature: 10.0°C > 5.8°C
Wind: NW 3 > 1
Part Cloudy > Mainly Clear, High Cloud

Bishop's Hill Moths 17th September, 2010



Bishop's Hill
17th September, 2010

2231 Deep-brown Dart (*Aporophyla lutulenta*)



2232 Black Rustic (*Aporophyla nigra*)

2266 Brown-spot Pinion (*Agrochola litura*)



2267 Beaded Chestnut (*Agrochola lychnidis*)

2364 Frosted Orange (*Gortyna flavago*)



Sloe Shieldbug ()

Bishop's Hill
17th September, 2010



Bishop's Hill
17th September, 2010



2452 Red Underwing (*Catocala nupta*)